
Conference on Building Information Modeling: Opportunities, Challenges, Processes, Deployment

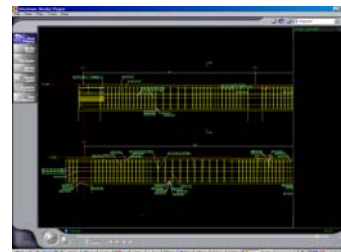
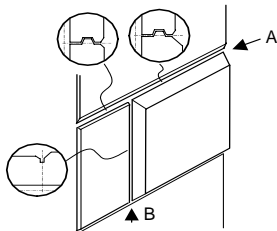
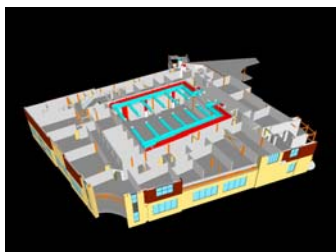
Sponsored by:

PhD Program, College of Architecture, Georgia Institute of Technology
The LaiserinLetter™

Motivation:

A new generation of AEC software is becoming available that is expected to completely change how architects, contractors, consulting engineers, subcontractors, practice and collaborate. The new design software that generates the information to make the new possibilities is based on *parametric modeling*. Together with analysis, costing, simulation and other engineering and business applications, this new software allows the development of what is being called *Building Information Modeling (BIM)*. The parametric modeling applications allow 3D definition of buildings at contract document level (or alternatively at shop drawing level) of all the parts, connections, specifications, functions and other product information about the building. Combined with integrated scheduling systems, cost estimating systems, and analysis tools, this software offers fundamentally new opportunities for improving the quality of design, shortening the building procurement life cycle, and reducing costs. An important confirmation of BIM is that the General Services Administration (GSA) has committed to begin a set of demonstration projects using BIM throughout the country starting in fiscal year 2006.

This conference will address the opportunities offered by the new technology, for building owners, for architects and designers, and for contractors and developers. Georgia Tech has been a leader in the development and testing of BIM modeling applications, and the integration software needed to allow applications to work together. The LaiserinLetter™ and its Editor, Jerry Laiserin, has been tracking this new technology and advising clients on its capabilities. This conference addresses these issues: what does BIM potentially provide, and what does it provide today? How can one assess BIM for a particular project? What are the implications of BIM and how should an organization assess it and plan for it? What are the deployment risks and opportunities?



PRIOR EVENING - MONDAY APRIL 18, 2005

6:30 – 8:00PM Registration

7:00 – 8:00PM Reception – Second Floor, Global Learning Center

(Sponsored by IES Ltd.)

**Conference on Building Information Modeling:
Opportunities, Challenges, Processes, Deployment**

DAY ONE - TUESDAY APRIL 19, 2005

8:00 Opening coffee (Sponsored by Bentley Systems)

8:30AM: Morning Session 1

Greetings: Dean Thomas Galloway

Conference Plan: Chuck Eastman and Jerry Laiserin

The morning session will address the following questions: What is BIM and what is it supposed to do? What technologies does BIM rely on? What companies are contributing to the BIM effort? What new functional and business capabilities does BIM afford? What are the current limitations of BIM? Can these limitations be overcome? What are the benefits, today and when it becomes fully operational? What are the impacts and transition costs associated with BIM?

9:00AM: Chuck Eastman will present a perspective based on past research and the underlying technologies being used and developed.

10:00AM: Jerry Laiserin will present a perspective on these questions based on past and current practice and what is available in current software

11:00AM: Break

11:15AM: Discussion and questions from the floor (Chuck and Jerry)

Noon: Lunch (Sponsored by Gehry Technologies LLC)

1:00PM: Afternoon Session 2

Presentations by major vendors of project design and detailing software, identifying functional capabilities for 3D construction documents, level of drawing report automation, their ability to detail what subsystems, and to interface with what other applications / services

Bentley Systems – Huw Roberts

IES Ltd. – Virtual Environment – Don McLean

Autodesk – Architectural Desktop – Rick Rundell

2:45 – 3:00: Break

Gehry Technologies – Digital Project – Malcolm Davies

Tekla – Tekla Structures – Stacy Scopano

Autodesk – Revit – Rick Rundell

5:00PM: Afternoon Session 3

Vendor Panel:

Discussing what can the various systems do today and what is lacking? What building and site systems can be designed and engineered, and at what level of detail? What parts of the building lifecycle are supported today? What firms are addressing the different parts of the lifecycle?

(Vendor panel, plus Fried Augenbroe, Chuck Eastman, Jerry Laiserin, Paul Teicholz)

7:30PM: Banquet Dinner (sponsored by Tectonic Network)

Keynote speaker Dennis Neeley, Vice President, Tectonic Network

**Conference on Building Information Modeling:
Opportunities, Challenges, Processes, Deployment**

DAY TWO - WEDNESDAY, APRIL 20, 2005

8:00AM: Opening coffee (sponsored by Bentley Systems)

8:30AM: Recap of Agenda Thus Far

9:00AM: Morning Session 4

Presentations by vendors providing strategic services based on BIM modeling, such as cost estimation, scheduling, product specifications, analysis capabilities, etc.

Interspec LLC – e-SPECS – Michael Brennan

Bentley Systems – Huw Roberts

Navisworks – Jetstream – Jonathan Widney

Autodesk – Douglas Look

Gehry Technologies – Digital Project – Malcolm Davies

Solibri – Model Checker – Heikki Kulusjarvi

EPM Technology – EXPRESS Data Manager – Kjell Bengtsson

Enterprixe – Project Workspace – Tapio Ristimäki

11:00AM: Break

11:15AM: Morning Session 5

Vendor panel:

Discussing what integration and exchange capabilities are possible now and in the near future? What new functional and workflow capabilities do these tools enable?

(Vendor panel, plus Fried Augenbroe, Vlado Bazjanac, Jeffrey Beard, Jerry Laiserin, Robert Lipman)

Noon: Lunch (sponsored by Autodesk) BIM User Forum

1:30PM: Afternoon Session 6 BIM Case Studies

Case studies of recent projects utilizing BIM capabilities:

What are the main issues to assess in adopting BIM technology? How to assess whether a project can be supported by BIM?

- BIM for Steel Construction - Robert Lipman (NIST) and Joe Dietrich (AISC)
- BIM for Precast Concrete Construction - David Orndorff (PCI)
- BIM for Energy Analysis - Vladimir Bazjanac (LBNL)
- BIM for Owners - Jerry Laiserin
- Applying BIM for Improved Project Delivery - Jeffrey Beard (ACEC, formerly DBIA)
- Applying BIM for Process Change - Jim Glymph (Gehry Partners)
- Applying BIM for Industry Integration - Paul Teicholz (founder of CIFE)

4:00PM: Break

4:15PM: Afternoon Session 7

BIM Futures Forum

Process change and industry integration. Where is this technology going? What else needs to be done in order to get there?

(Fried Augenbroe, Chuck Eastman, Jerry Laiserin, Paul Teicholz)

5:30PM: Closing remarks - Chuck and Jerry

6:00PM: Adjourn

Dinner (sponsored by Tekla)

**Conference on Building Information Modeling:
Opportunities, Challenges, Processes, Deployment**

**Conference on Building Information Modeling
Held at the Georgia Tech Global Learning Center
REGISTRATION**

Early-bird registration (through March 27, 2005)	\$750.00
Regular registration (after March 27, 2005)	\$850.00

The organizers reserve the right to reject, in their sole discretion, any registration at any time.

The registration fee for journalists, analysts, consultants, dealers and non-sponsoring vendors is \$5,000 and is contingent on prior written approval by the organizers. Contact Jerry Laiserin -- jerry@laiserin.com -- for more information.

Registration Site:

http://www.pe.gatech.edu/conted/servlet/edu.gatech.conted.course.ViewCourseDetails?COURSE_ID=624



Sponsored by PhD Program, College of Architecture, Georgia Tech and The LaiserinLetter™

Ph.D. Program Office
College of Architecture
Georgia Institute of Technology
Atlanta GA 30332-0155
